

Revisions:	Drawn / Chkd:	Date:
P1 Planning Issue	SP / CG	13/03/19
P2 Final Planning Issue	SP / CG	28/03/19

- Key:**
- Application boundary 28,556 m<sup>2</sup> / 2.8556 ha / 7.06 acres
  - Lighting bollards
  - Lighting columns. Refer to Silcock Dawson External Lighting Strategy
  - Existing trees
  - Existing trees removed
  - Proposed trees as Aspect Landscape scheme
  - Retaining wall (gabion)
  - Retaining wall (brick faced)
  - Dual EV charging points
  - Tesco trolley bay
  - Permeable parking - area of no dig for root protection
  - Approximate line of RPA to existing trees
  - 2.4 x 43 m Visibility Splay
  - Approximate line of retained tree canopy

## Final Planning Issue

Client:  
**Hendy** LDA  
 Project:  
**Hendy New Car Showroom Pembury**  
 24 Church St. West, Woking, Surrey, GU21 6HT  
 01483 494 350  
 lda@ldaarchitects.co.uk  
 www.ldaarchitects.co.uk

Drawing Title:  
**Site Plan**

Scale @ A1: 1:500  
 Scale @ A3: 1:1000

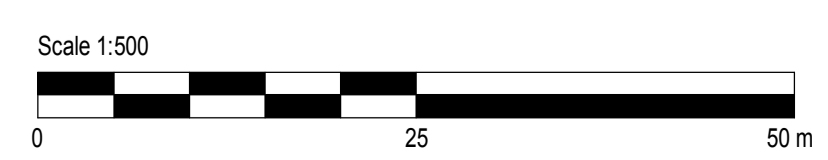
Checked by: CG  
 Date: 07/23/18

Job No: 1710  
 Stage\_Drawing No: PL\_04  
 Rev: P2

Issue Status:  
 Construction  Preliminary   
 Information  Approval   
 Tender

Architecture  
 Planning  
 Space Planning  
 Interior Design

Offices  
 Woking



1 Site Plan  
 1 : 500